



**Carlos Arellano Martinez**  
 The Woodlands / Houston, TX 77382  
 Phone: 832-228-4902  
 Email: [carlosarellanomartinez@outlook.com](mailto:carlosarellanomartinez@outlook.com)  
 LinkedIn: [www.linkedin.com/in/carlos-arellano-martinez](http://www.linkedin.com/in/carlos-arellano-martinez)

## C.A.M. - DESIGN PORTFOLIO

### About Me

I am a foreign-trained Architect and BIM-focused Project Designer with 20+ years of experience and 7+ years in Houston delivering Revit-based BIM models, construction document sets, and fabrication/installation-ready shop drawings for healthcare-led interiors and commercial office projects. Specialized in prefabricated interior construction systems (Falkbuilt)—premanufactured partitions, glass fronts, doors, operable walls, millwork, and vinyl wall protection—supported by strong field verification/as-builts, including coordinating on-site measurements and translating field conditions into accurate documentation. Proven in Arch/MEP interface coordination and disciplined revision control through RFIs, submittals, QA/QC markups, and document management using ACC/Procore and Bluebeam. Authorized to work in the U.S.

### About This Portfolio

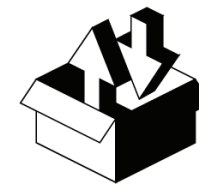
This portfolio features selected projects from my recent and prior professional experience, along with examples of my Revit, AutoCAD, and Photoshop skills.



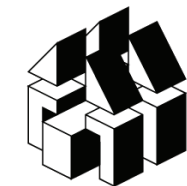
Recent Experience



Architectural Consultant



Prior Experience



Software Skills



### Recent Experience

Over more than seven years at NMG Workspace Solutions, I contributed to a wide range of healthcare, office, and commercial projects in the Middle East—primarily Kuwait and Saudi Arabia—as well as in the United States. NMG specializes in modular interior construction for complex healthcare environments, delivering prefabricated interior partition systems for spaces throughout hospitals, including ORs, imaging, and support areas, with integration of advanced technology and building systems. The same modular approach is applied to office, commercial, and educational projects. NMG's off-site fabrication and streamlined installation support fast-track, clean builds with reduced on-site trades, improved efficiency, and minimal jobsite waste through modern manufacturing processes and construction expertise.

### Selected Projects

- Townsen Memorial Hospital West (Building A) . . . . . 3  
Houston, TX
- Dialysis Center . . . . . 4  
Al Ahmadi, Kuwait
- Jefferson Bank . . . . . 5  
San Antonio, TX
- UT Continuum of Care . . . . . 6  
Houston, TX
- MMC Chicago Offices . . . . . 7  
Chicago, IL



## Townsen Memorial Hospital West (Building A)

Houston, TX

Townsen Memorial Hospital–West in Houston is a pioneering prefabricated micro-hospital that redefines healthcare delivery through innovative design. The 66,167-square-foot facility includes a comprehensive interior build-out within an existing two-story structure and showcases how modular construction methods and patient-centric planning can deliver a state-of-the-art medical environment.

NMG Workspace Solutions—specialists in modular interior construction—designed, fabricated, and installed the prefabricated interior partitions, doors, and millwork for public areas, nurse stations, patient rooms, offices, support spaces, the emergency department, ORs, and imaging rooms, based on the architectural design intent and in coordination with the architect of record.

### Role / Title

Project Designer and Coordinator of site field verifications.

### Tools / Platforms

AutoCAD • Revit • Bluebeam • Enscape • Autodesk Construction Cloud • Procore



## Recent Experience

### Key Responsibilities

1. Coordinated site field verification and managed measurement workflows to capture existing conditions and produced as-built documentation.
2. Converted architectural design intent into a coordinated prefabricated partitions and glass-front system layout.
3. Produced and maintained the background plan for each level.
4. Built and maintained the Revit model for partitions, doors, millwork, and renderings.
5. Produced shop drawing packages (plans, elevations, details, schedules) for client approval and for fabrication at the factory.
6. Placed orders for wall production at the factory.
7. Reviewed the 3D models created by the factory and approved them to proceed with production of the walls.
8. Managed RFI/submittal-driven revisions, tracking changes and issuing updated drawing sets.
9. Coordinated with Arch/MEP to resolve clashes and align penetrations, power/data needs, and equipment interfaces.
10. Coordinated on-site wall layout, coordinating partition locations with architectural drawings and MEP systems to support accurate installation.
11. Supported the installation team with on-site troubleshooting, layout clarifications, and installation-ready details.

### Deliverables

- As-built drawings •Updated background plans •Construction documents set •Shop drawings set
- Details and schedules (door, hardware, finishes, keynotes) •Millwork shop drawings set •Renderings
- On-site wall layout •RFI/submittal logs and revised drawing issues





## Dialysis Center

Al Ahmadi, Kuwait

In Al Ahmadi, Kuwait, within a new 4-story, 12,250-sqm (131,858-sq-ft) building, NMG was responsible for the design, fabrication, and installation of all interior partitions and millwork for the dialysis stations and nurse stations located on the three upper floors.

### Role / Title

Project Designer and Team Leader

### Tools / Platforms

AutoCAD • Revit • Bluebeam • Autodesk Construction Cloud



## Recent Experience

### Key Responsibilities

1. Converted architectural design intent into a coordinated prefabricated partitions layout.
2. Produced and maintained the background plan for each level.
3. Built and maintained the Revit model for partitions, doors, millwork, and renderings.
4. Produced shop drawing packages (plans, elevations, details, schedules) for client approval and for fabrication at the factory.
5. Coordinated the design team in the production of interior partition and millwork shop drawings and provided progress updates to the Design Team Manager and Project Manager.
6. Placed orders for wall production at the factory.
7. Reviewed the 3D models created by the factory and approved them to proceed with production of the walls.
8. Supported the installation team with on-site troubleshooting, layout clarifications, and installation-ready details.

### Deliverables

- Updated background plans
- Shop drawings set
- Details and schedules (door, hardware, finishes, keynotes)
- RFI/submittal logs and revised drawing issues





## Jefferson Bank San Antonio, TX

For the new 13-story, 486,210-sq-ft Jefferson Bank Headquarters tower in the Pearl District of San Antonio, Texas, NMG, as a subcontractor, designed, fabricated, and installed prefabricated interior glass partitions and glass doors for offices, meeting rooms, and conference rooms across seven of the 13 floors, based on the architectural design intent.

Role / Title  
Project Designer and Coordinator of site field verifications.

Tools / Platforms  
AutoCAD • Revit • Bluebeam • Autodesk Construction Cloud



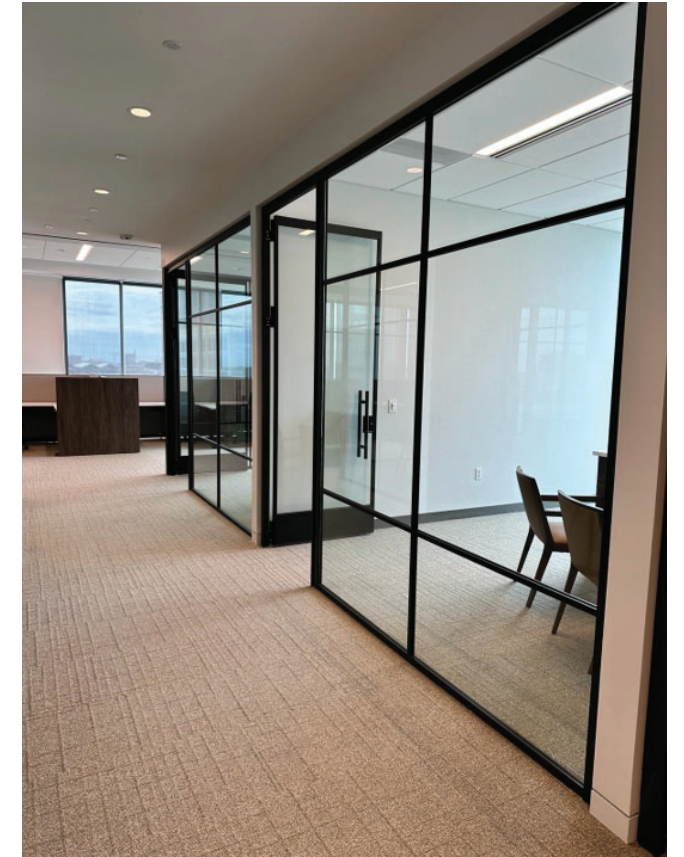
### Recent Experience

#### Key Responsibilities

1. Coordinated site field verification and managed measurement workflows to capture existing conditions and produced as-built documentation.
2. Converted architectural design intent into a coordinated prefabricated partitions and glass-front system layout.
3. Produced and maintained the background plan for each level.
4. Built and maintained the Revit model for partitions, doors, millwork, and renderings.
5. Produced shop drawing packages (plans, elevations, details, schedules) for client approval and for fabrication at the factory.
6. Placed orders for wall production at the factory.
7. Reviewed the 3D models created by the factory and approved them to proceed with production of the walls.
8. Managed RFI/submittal-driven revisions, tracking changes and issuing updated drawing sets.
9. Supported the installation team with on-site troubleshooting, layout clarifications, and installation-ready details.
10. Supported the installation team with on-site troubleshooting, layout clarifications, and installation-ready details.

#### Deliverables

•As-built drawings •Updated background plans •Construction documents set •Shop drawings set •Details and schedules (door, hardware, finishes, keynotes) •RFI/submittal logs and revised drawing issues





## UT Continuum of Care

Houston, TX

UT Health Continuum of Care is a 265,667 SF mental health facility where NMG contributed as a subcontractor delivering prefabricated interior partition systems with integrated media screens and millwork. The scope focused on converting architectural design intent into coordinated, fabrication-ready solutions for key public and clinical-support spaces, including the main lobby, elevator lobbies, corridors, and therapy support areas such as common spaces and group rooms.

I coordinated site measurement/verification efforts, developed as-built background plans reflecting field conditions, established the Revit template and project setup, and supported the installation team with technical documentation and on-site coordination.

### Role / Title

Project Designer and Coordinator of site field verifications.

### Tools / Platforms

AutoCAD • Revit • Bluebeam • Autodesk Construction Cloud



## Recent Experience

### Key Responsibilities

1. Coordinated site field verification and managed measurement workflows to capture existing conditions and produced as-built documentation.
2. Produced and maintained the background plan for each level.
3. Built and maintained the Revit model for partitions, doors, and millwork.
4. Produced shop drawing packages (plans, elevations, details, schedules) for client approval and for fabrication at the factory.
5. Placed orders for wall production at the factory.
6. Reviewed the 3D models created by the factory and approved them to proceed with production of the walls.
7. Managed RFI/submittal-driven revisions, tracking changes and issuing updated drawing sets.
8. Supported the installation team with on-site troubleshooting, layout clarifications, and installation-ready details.

### Deliverables

- As-built drawings
- Updated background plans
- Shop drawings set
- Details and schedules (door, hardware, finishes, keynotes)
- RFI/submittal logs and revised drawing issues





## MMC Chicago Offices

Chicago, IL

Located in an office tower in the heart of Chicago's financial district, this project involved the renovation of five office floors. NMG's scope of work, as a subcontractor to the General Contractor, included the design, fabrication, and installation of prefabricated interior glass partitions and glass doors for offices, focus rooms, meeting rooms, and conference rooms across those five floors, based on the architectural design intent.

### Role / Title

Project Designer, Coordinator of site field verifications, and Installation Supervisor.

### Tools / Platforms

AutoCAD • Revit • Bluebeam • Autodesk Construction Cloud



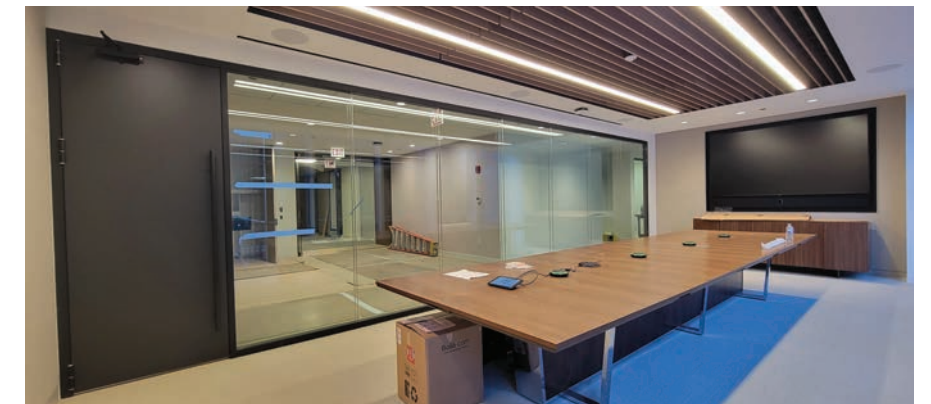
## Recent Experience

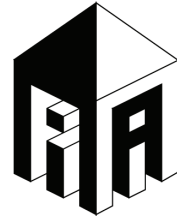
### Key Responsibilities

1. Coordinated site field verification and managed measurement workflows to capture existing conditions and produced as-built documentation.
2. Converted architectural design intent into a coordinated prefabricated partitions and glass-front system layout.
3. Produced and maintained the background plan for each level.
4. Built and maintained the Revit model for partitions, doors, and millwork.
5. Produced shop drawing packages (plans, elevations, details, schedules) for client approval and for fabrication at the factory.
6. Placed orders for wall production at the factory.
7. Reviewed the 3D models created by the factory and approved them to proceed with production of the walls.
8. Supported the installation team with on-site troubleshooting, layout clarifications, and installation-ready details.
9. Supervised the installation team during interior partition installation, processed deficiency/punch reports, and provided weekly progress updates to the Project Manager and GC.

### Deliverables

- As-built drawings •Updated background plans •Shop drawings set •Details and schedules (door, hardware, finishes, keynotes) •RFI/submittal logs and revised drawing issues •Weekly progress reports
- Deficiency reports





## Architectural Consultant

Independent Architectural Consultant providing architectural design support to owners and contractors, including space planning, layouts, design development, Revit-based BIM modeling, and construction documentation from early concept through construction for commercial and residential projects.

### Selected Projects

- Single Family House . . . . . 9  
Willis, TX
- Landscape Design – Chirinos Single-Family Residence . . . . . 10  
Magnolia, TX
- Miyagi Ken, Karate Dojo . . . . . 11  
Spring, TX



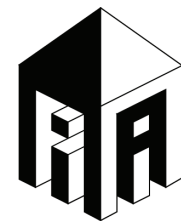
# Single Family House

Willis, TX

Cornerstone Building Innovations (General Contractor) hired me as an Independent Architectural Consultant to develop the architectural design for a two-story single-family residence on a 5,945.45-sq-ft lot in Willis, Texas (Lake Conroe), with a net building area of 4,489.5 sq ft. The first floor includes a vestibule, guest bathroom, homework nook (two workstations), kitchen with pantry and laundry, double-height living/dining area, common coat closet, primary suite, and garage; the second floor includes three bedrooms (each with a private bath and walk-in closet), a game room, and an additional living area, with exterior spaces consisting of a patio at first-floor level and a wood deck at lake level.

Role / Title  
Independent Architectural Consultant

Tools / Platforms  
Revit • AutoCAD • Enscape • Adobe Creative Suite



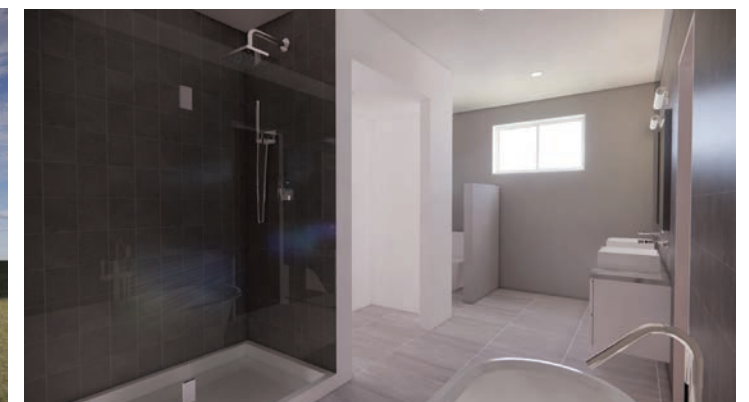
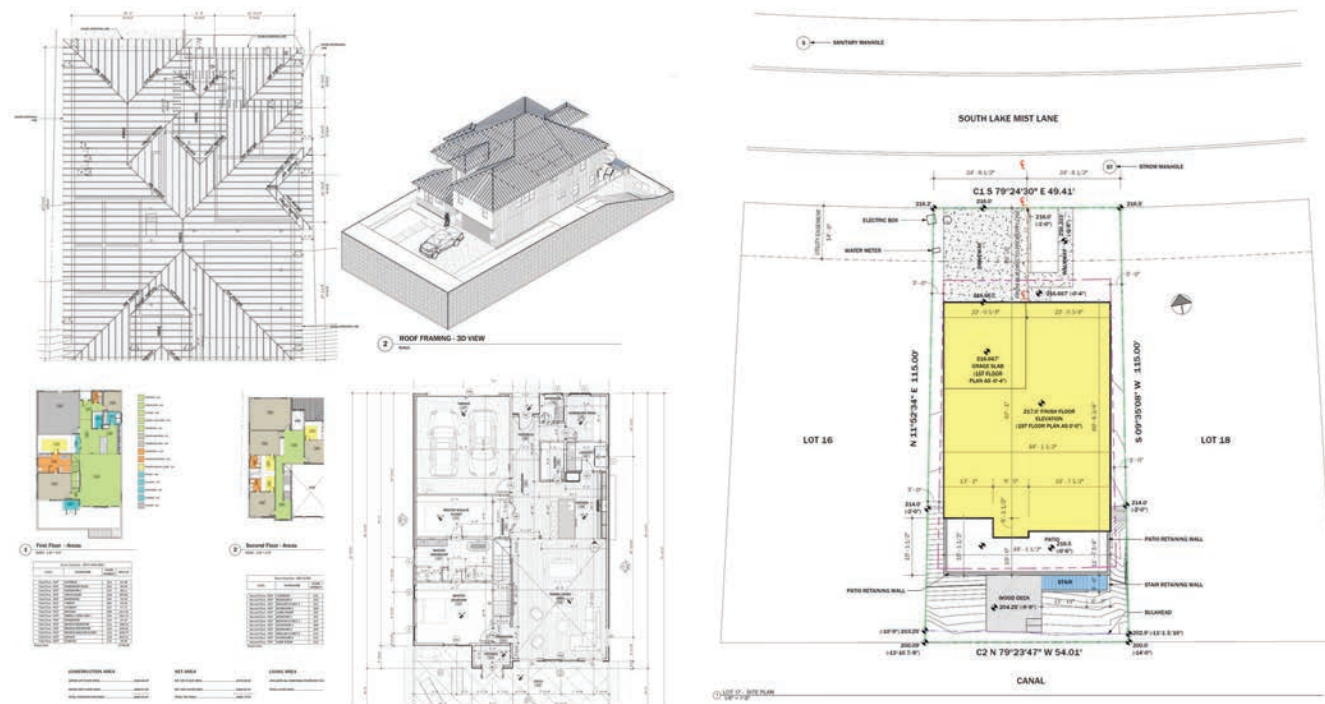
**Architectural  
Consultant**

## Key Responsibilities

1. Developed the architectural design for a two-story single-family residence, translating client requirements and site conditions into a cohesive residential program.
2. Defined floor layouts, vertical relationships, and interior spatial organization, including double-height living spaces and primary suite planning.
3. Designed exterior living areas, including a first-floor patio and a wood deck at lake level, integrated with the site and views toward Lake Conroe.
4. Coordinated with the General Contractor to align the architectural design with constructability, budget, and site constraints.

## Deliverables

- Schematic Design (SD) drawing sets
- Design Development (DD) drawing sets
- Revit-based BIM models
- Dimensioned floor plans, elevations, and sections
- Architectural details and schedules (doors, partitions, windows, finishes)
- Area calculations
- Construction Documents (CDs)





## Landscape Design – Chirinos Single-Family Residence

Magnolia, TX

The Chirinos family owns a home in Magnolia, Texas, and hired me to provide a landscape design for the home's 1,553.99-sq-ft backyard. The design concept was inspired by traditional Japanese gardens and the shoreline of Lake Valencia near Maracay, Venezuela. The design intent organizes the backyard into three distinct outdoor areas connected by a paver path that begins at the existing covered patio attached to the house on the south side of the backyard and terminates at the exit gate along the north fence. The proposal was developed to guide the client in defining softscape and hardscape elements, including planting strategy, lighting, water features, outdoor furniture, planters, drainage, and base materials, aligned with the client's preferences and goals.

### Role / Title

Independent Architectural Consultant / Landscape Designer

### Tools / Platforms

Revit • AutoCAD • Enscape • Sketching • Adobe Creative Suite



**Architectural  
Consultant**

### Key Responsibilities

1. Performed site field verification and managed measurement workflows to capture existing conditions and produced as-built documentation.
2. Coordinated directly with the homeowner to translate preferences and budget considerations into a buildable landscape design concept.
3. Led the landscape design from concept through schematic development, organizing the backyard into defined outdoor zones and circulation paths inspired by Japanese garden principles.
4. Defined softscape and hardscape strategies, lighting concepts, water features, drainage intent, and material palettes aligned with client goals.

### Deliverables

- Conceptual landscape plan
- Hardscape and softscape layout drawings
- Planting strategy and material palette
- Lighting, drainage, base materials, and water-feature concept diagrams
- Outdoor furniture and planters definition
- Client presentation package





## Miyagi Ken, Karate Dojo Spring, TX

Miyagi Ken Karate Dojo in Spring, Texas relocated into a 4,200-sq-ft commercial space to establish its main dojo serving the North Houston area. I provided early-stage design consulting (space planning, concept development, and schematic layouts), reviewed the Architect of Record's construction documents for alignment with the owner's goals, supported periodic construction oversight, and completed final-phase selections and detailing including the overall color palette and millwork design for the front desk, pro-shop, public lockers, and protein bar café.

Role / Title  
Independent Architectural Consultant / Design Consultant

Tools / Platforms  
Sketching • AutoCAD • Revit • Enscape

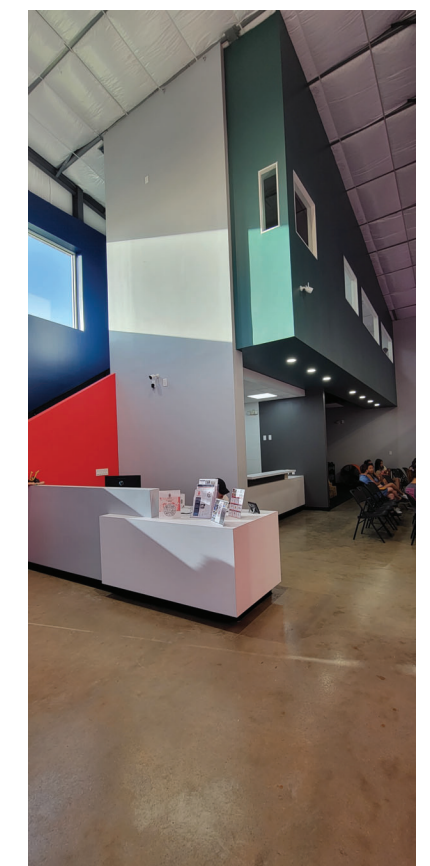
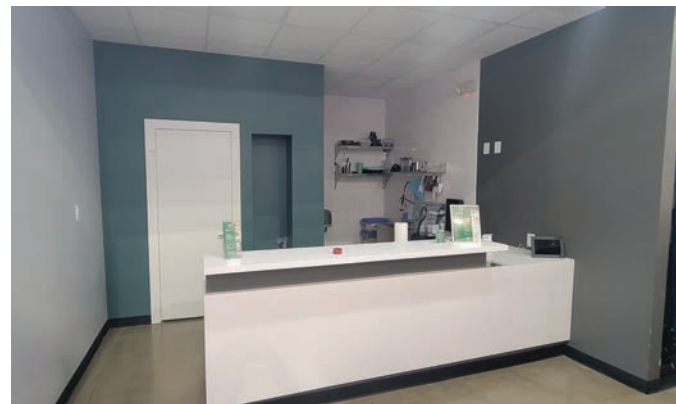


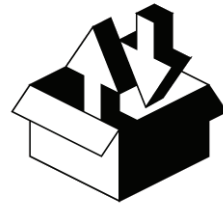
### Key Responsibilities

1. Provided early-stage design consulting for the dojo relocation, including space planning, concept development, and schematic layout sketches for a 4,200-sq-ft commercial space.
2. Reviewed the Architect of Record's construction document set to confirm alignment with the owner's goals and program requirements.
3. Supported periodic construction oversight through site visits, tracking progress against plans/specifications, quality standards, budget, and schedule.
4. Completed final-phase interior direction, including overall color palette selection and millwork design for the front desk, pro-shop, public locker area, and protein bar café.
5. Coordinated directly with the owner and interfaced with the Architect of Record and construction team to support decision-making, verify design alignment, and facilitate execution during construction.

### Deliverables

- Schematic space plans and layout studies
- Concept sketches and early design options for owner decision-making
- Construction document review markups/comments (QA alignment to owner goals)
- Finish direction package (color palette guidance)
- Millwork design drawings for front desk, pro-shop, lockers, and protein bar café





### Prior Experience

From 2001 to 2016, I worked with architectural firms, general contractors, and private investors in roles including Project Architect, Project Manager, Resident Inspector, and Project Engineer. I delivered healthcare, commercial, residential, and public school projects—supporting design and project development in architecture firms, providing owner’s field oversight as a Resident Inspector, and coordinating documentation and field execution for a GC on public school construction. As an Independent Project Architect, I also provided full architectural design and project development services. This experience built end-to-end capability across all phases, from concept through construction.

### Selected Projects

- Outpatient Clinic, Agustín Zubillaga Children's Hospital . . . . . 13  
Barquisimeto, Venezuela
- El Tocuyo Private Clinic . . . . . 14  
El Tocuyo, Venezuela
- Santo Domingo Private Clinic. . . . . 15  
Santo Domingo, Ecuador
- Iacobozzi Distributor – Corporate Offices . . . . . 16  
Barquisimeto, Venezuela



## Outpatient Clinic, Agustín Zubillaga Children's Hospital

Barquisimeto, Venezuela

C.M. Arquitectura y Urbanismo is an architectural firm that delivers full architectural design and project development services. As part of the firm, I participated in the Outpatient Clinic for Dr. Agustín Zubillaga Children's Hospital project as Project Architect, developing the architectural design under the guidance of the Senior Project Architect. The hospital is part of Venezuela's public healthcare system and integrates with the Hospital Central Antonio María Pineda campus in Barquisimeto, Lara State, Venezuela.

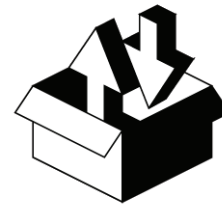
The project is planned on a 122,150.58-sq-ft lot (11,348.16 m<sup>2</sup>) and consists of five 3-story buildings. Together, they provide 62 consultation rooms and 30 specialty diagnostic/exam environments supporting 32 pediatric medical specialties. All buildings are connected through a central circulation core composed of stairs, accessible ramps, elevators, and corridors, and the master plan reserves space for a future expansion building of similar characteristics.

Lot area: 122,150.58 sq ft (11,348.16 m<sup>2</sup>)

Total construction area: 84,273.45 sq ft (7,829.26 m<sup>2</sup>)

Role / Title  
Project Architect

Tools / Platforms  
AutoCAD • Sketching • Adobe Creative Suite (presentations)



**Prior Experience**



### Key Responsibilities

1. Supported the Senior Project Architect to develop the architectural design for the Outpatient Clinic for Dr. Agustín Zubillaga Children's Hospital, translating the established design intent into coordinated plans and layouts.
2. Developed and coordinated architectural drawings for a multi-building outpatient clinic complex, including spatial organization, circulation, and functional relationships for pediatric outpatient services, diagnostic/exam areas, and support spaces.
3. Coordinated architectural layouts with structural and MEP design inputs to ensure program compliance and constructability within a public healthcare campus.

### Deliverables

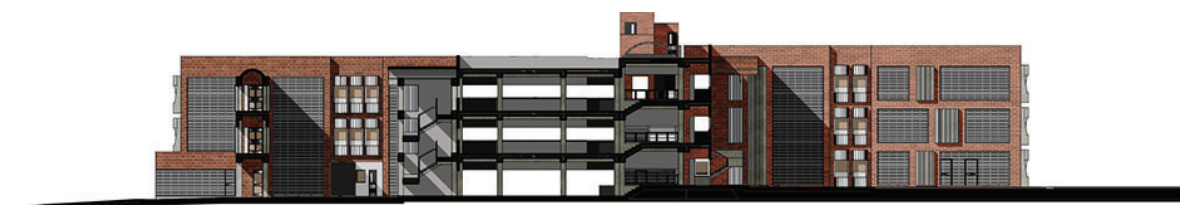
- Schematic Design (SD) drawing sets
- Design Development (DD) drawing sets
- Construction Documents (CDs)
- Architectural floor plans, sections, and elevations
- Architectural details and schedules
- Area calculations



Fachada Noreste  
Esc. 1:100



Fachada Sureste  
Esc. 1:100



Corte de Conjunto A-A  
Esc. 1:100



## El Tocuyo Private Clinic

El Tocuyo, Venezuela

C.M. Arquitectura y Urbanismo designed a clinic for a private investor seeking to expand access to modern medical services in El Tocuyo, Lara State, Venezuela. As part of the firm, I participated as Project Architect, developing the architectural design and plumbing (MEP) drawings under the guidance of the Senior Project Architect.

The building includes 17,277.04 sq ft (1,605.09 m<sup>2</sup>) of total construction area distributed across three floors. The architectural program includes an emergency room, eight outpatient consultation rooms, eight inpatient bedrooms, waiting areas, a clinical laboratory, laundry, kitchen, sterilization, surgery, nursing facilities, administrative offices, meeting rooms, public restrooms, and retail/commercial spaces.

Lot area: 7,575.64 sq ft (703.80 m<sup>2</sup>)

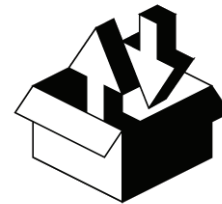
Total construction area: 17,277.04 sq ft (1,605.09 m<sup>2</sup>)

Role / Title

Project Architect

Tools / Platforms

AutoCAD • Sketching • Adobe Creative Suite (presentations)



**Prior Experience**

### Key Responsibilities

1. Developed the architectural design for a private healthcare clinic, translating the client's program and operational requirements into coordinated layouts under the guidance of the Senior Project Architect.
2. Prepared architectural drawings for a multi-story facility, defining spatial organization and functional relationships for emergency services, outpatient consultation, inpatient rooms, surgery, diagnostics, and support areas.
3. Developed plumbing and electrical drawings per MEP engineer design and coordinated architectural layouts with structural and MEP design inputs to ensure constructability and code compliance.

### Deliverables

- Design Development (DD) drawing sets
- Construction Documents (CDs)
- Architectural floor plans, sections, and elevations
- Architectural details and schedules
- Plumbing and electrical drawing sets
- Area calculations





## Santo Domingo Private Clinic

Santo Domingo, Ecuador

F.M.V., an architectural firm based in Quito, Ecuador, engaged me as Project Architect / Architectural Consultant to develop the architectural project for the Santo Domingo Private Clinic under the guidance of the Senior Project Architect. The design was developed over an abandoned structure that was acquired and repurposed for a new private clinic. The proposal included a 7-story building with seven outpatient exam/consult rooms, two operating rooms (ORs), one LDR (Labor & Delivery) room, 13 inpatient patient rooms, a radiology department, an emergency room, a clinical laboratory, a pharmacy, Central Sterile (CSSD), kitchen and laundry services, and maintenance/support spaces.

The project presented two primary challenges: (1) adapting and leveraging an existing structure for healthcare use, and (2) designing within an irregular lot that contained an existing house near the center of the site. As a result, the new building is set back behind the house, allowing the design to preserve and integrate the residence while organizing parking, maintenance, and service areas around it.

Lot area: 8,870.75 sq ft (824.12 m<sup>2</sup>)

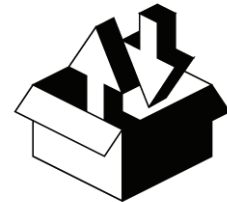
Total construction area: 34,262.60 sq ft (3,183.10 m<sup>2</sup>)

Role / Title

Project Architect / Architectural Consultant

Tools / Platforms

AutoCAD • Sketching • Adobe Creative Suite (presentations)



**Prior Experience**

### Key Responsibilities

1. Developed the architectural project for the Santo Domingo Private Clinic, adapting an existing abandoned structure for healthcare use under the guidance of the Senior Project Architect.
2. Coordinated the multi-story program layout and vertical circulation to support outpatient services, ORs, LDR, inpatient rooms, imaging/radiology, emergency, laboratory, pharmacy, and Central Sterile (CSSD), along with required support spaces.
3. Resolved key site constraints by coordinating building massing and footprint within an irregular lot containing an existing house near the center of the site, setting the new building back and organizing parking and service areas around it.
4. Led the project architect team in the production of construction drawings (CDs), coordinating drawing progress and quality to support project delivery.

### Deliverables

- Design Development (DD) drawing sets
- Construction Documents (CDs)
- Architectural floor plans, sections, and elevations
- Architectural details and schedules
- Area calculations





## Iacobozzi Distributor – Corporate Offices

Barquisimeto, Venezuela

Iacobozzi Distributor is a company dedicated to the wholesale and retail sale of cleaning supplies, based in Barquisimeto, Lara State, Venezuela. The company operates from a warehouse on the east side of the city. At this location, C.M. Arquitectura y Urbanismo designed a second office building for the company. As part of the firm, I participated as Project Architect, developing the architectural design for Phase 2 of the Iacobozzi Headquarters—a new, street-facing office building located within the existing parking lot and intended for rental use.

The building connects directly to the street and pedestrian flow and was conceived as the public image of the company. Because the surrounding context is composed of neutral, utilitarian buildings with limited urban character, the design aims to create a strong presence along the sidewalk. The proposal integrates portions of the perimeter fence into the building massing to define the main entrance, using contrasting elements and materials to draw attention from passersby.

Lot area: 3,108.83 sq ft (288.82 m<sup>2</sup>)

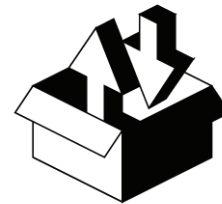
Total construction area: 2,846.84 sq ft (264.48 m<sup>2</sup>)

Role / Title

Project Architect

Tools / Platforms

AutoCAD • Sketching • Adobe Creative Suite (presentations)



**Prior Experience**

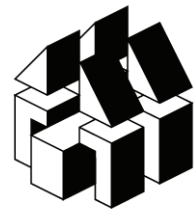
### Key Responsibilities

1. Developed the architectural design for Phase 2 of the Iacobozzi Distributor Headquarters, a new street-facing office building located within the existing warehouse site and parking area.
2. Defined the building's massing, façade composition, and site integration to establish a strong corporate image and enhance visibility along the public sidewalk within a predominantly utilitarian urban context.
3. Designed the architectural layout and circulation to connect the new office building with the surrounding site, integrating the perimeter fence and entry elements to clearly define the main access.
4. Coordinated the architectural design development under the guidance of the Senior Project Architect, ensuring alignment with client goals, site constraints, and constructability.

### Deliverables

- Design Development (DD) drawings
- Architectural floor plans, elevations, and sections
- Façade and massing studies
- Architectural details and schedules
- Area calculations



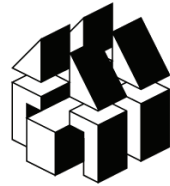


## Software Skills

My work is supported by proficiency in industry-standard design and documentation tools. I use Revit and AutoCAD to develop coordinated architectural drawings and BIM models, from design development through construction documentation, and Enscape to produce real-time visualizations that support design intent, coordination, and client communication. I also use Bluebeam Revu for drawing review, markup, quantity takeoffs, and measurements, and Adobe Creative Suite for graphic and presentation deliverables. This section features selected work examples created using AutoCAD, Revit, Enscape, and Photoshop

## Selected Works Examples

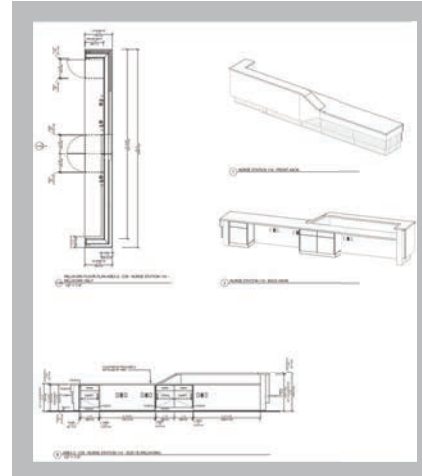
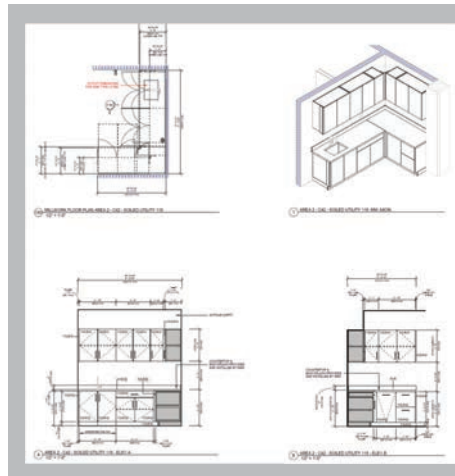
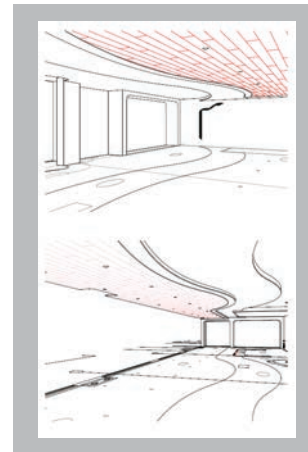
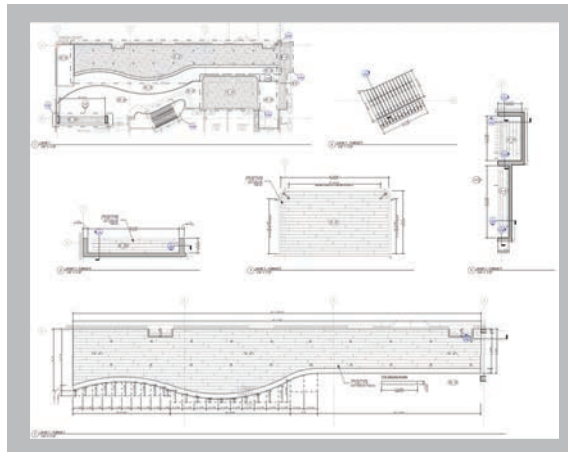
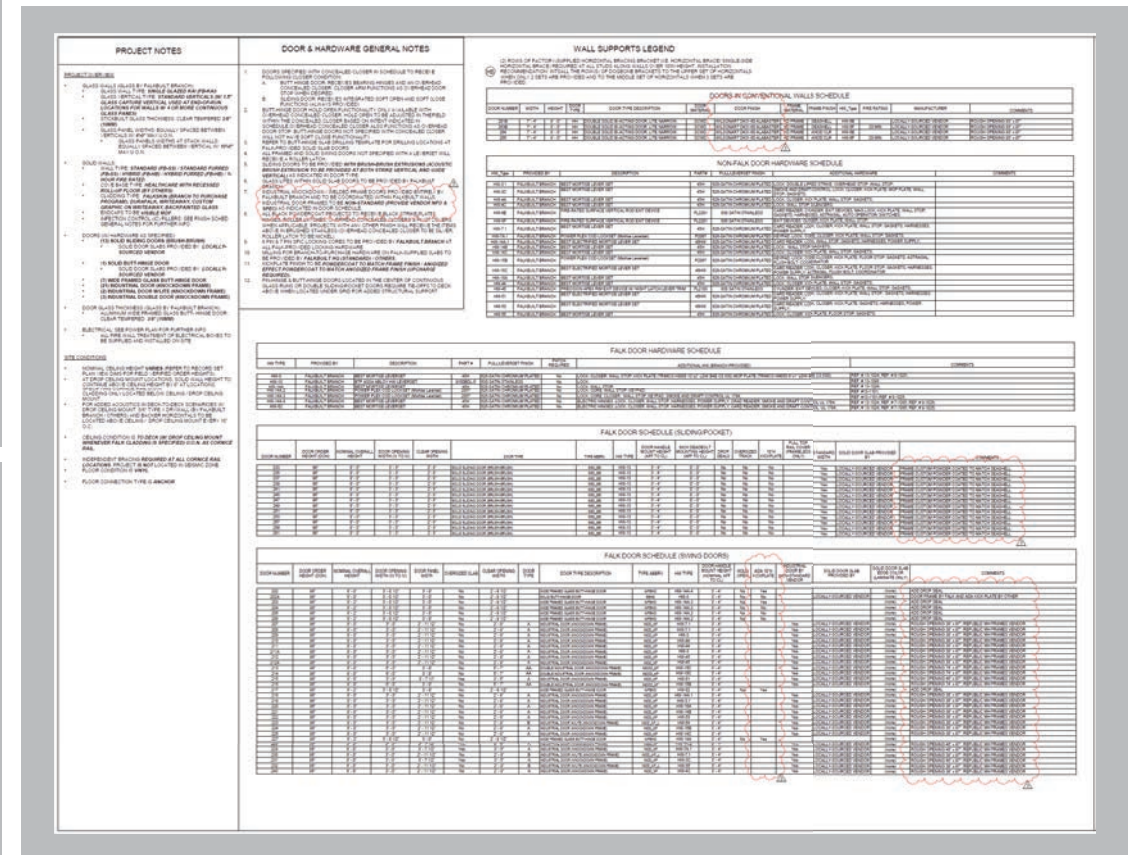
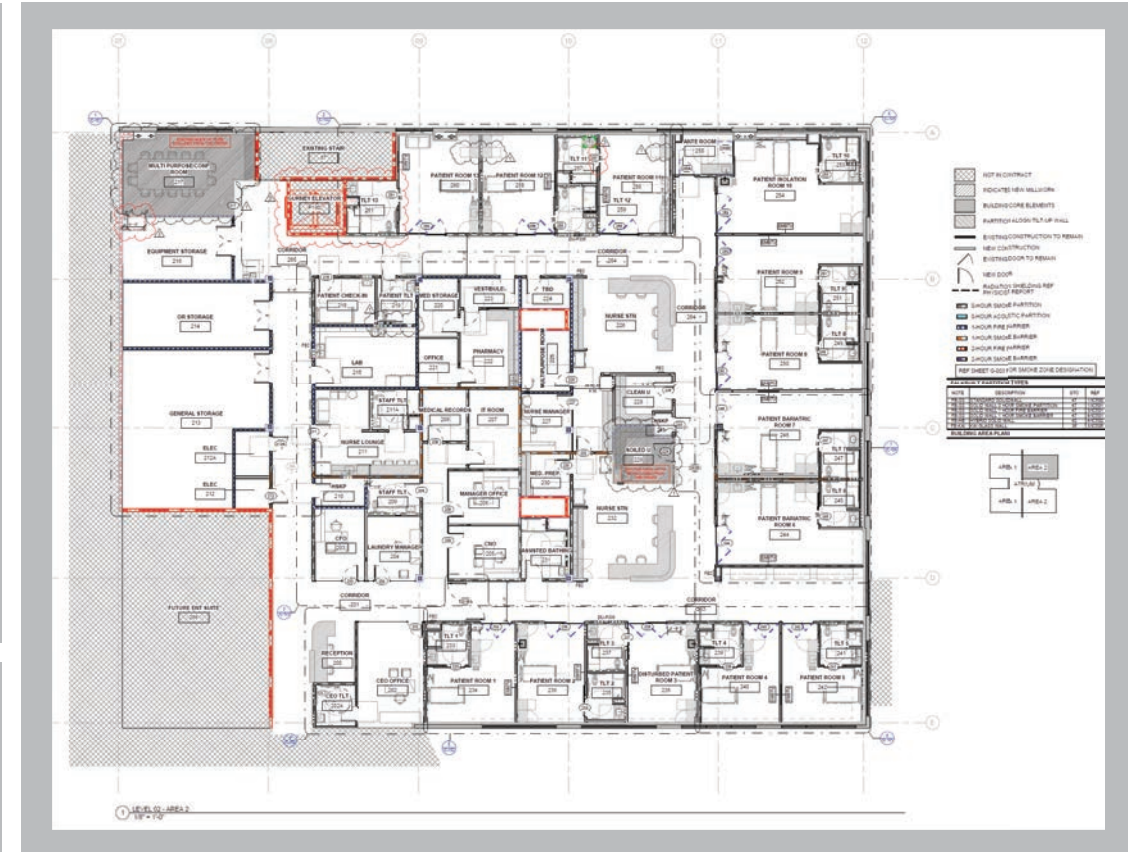
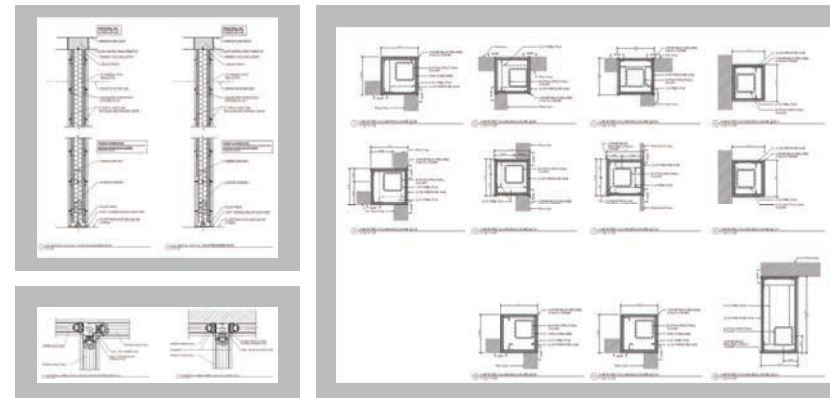
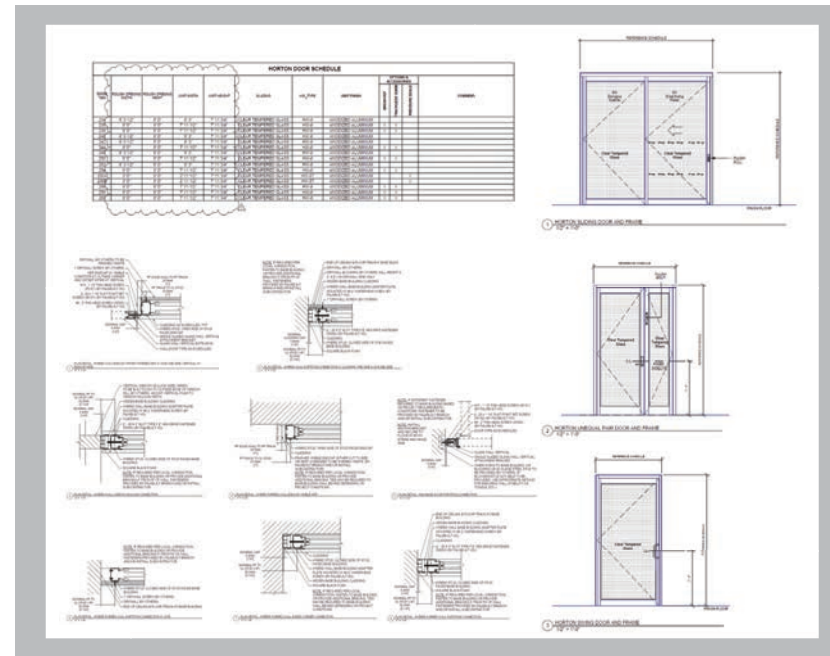
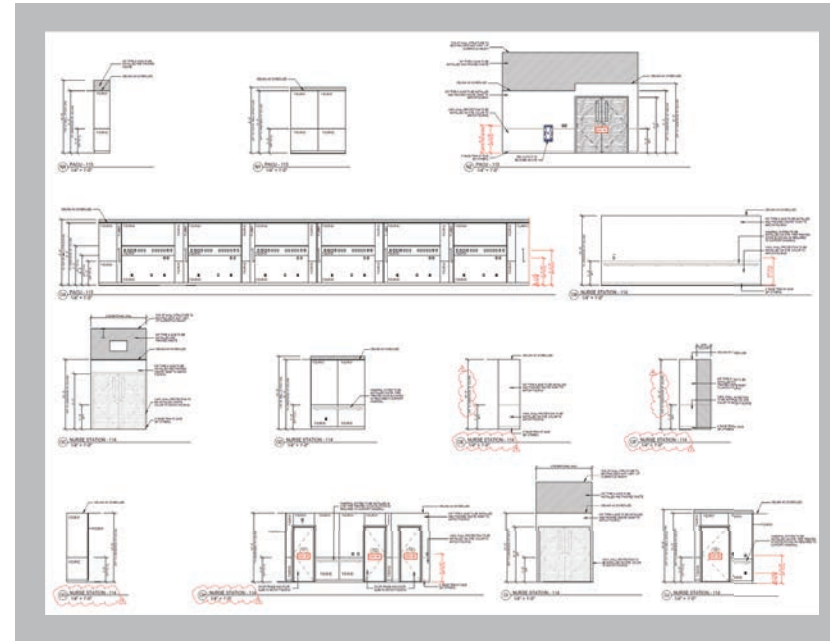
Revit . . . . .	18
AutoCAD . . . . .	19
Enscape . . . . .	20
Photoshop . . . . .	21



### Software Skills

### Revit

These examples demonstrate proficiency producing complete, coordinated construction document sets. They include an overall floor plan with required grids, tags, key plans, legends, callout views, revision clouds, and filters to differentiate wall types. Other examples shown include elevations with dimensions and notes, door and hardware schedules, enlarged details, typical wall sections, RCPs, and millwork drawings with 3D views. These examples showcase strong management of families, sheet setup, scales, schedules, drafting views, and both modeling and drafting workflows. I am also proficient working with both central and local Revit models, with a preference for central models, especially on large projects that require team collaboration through ACC.



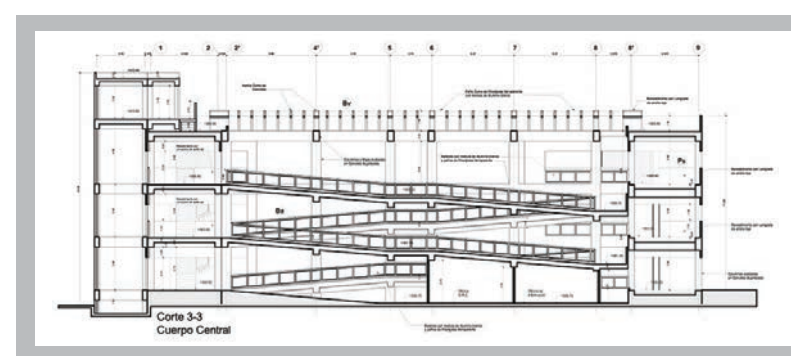
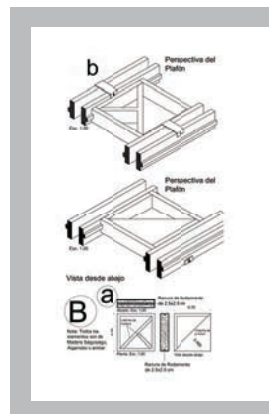
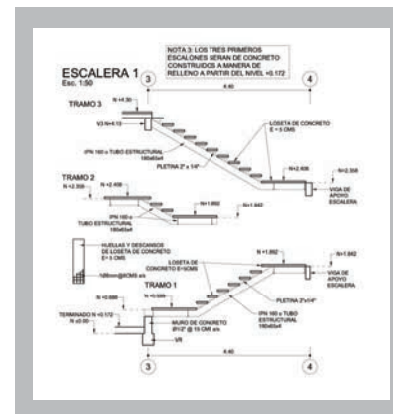
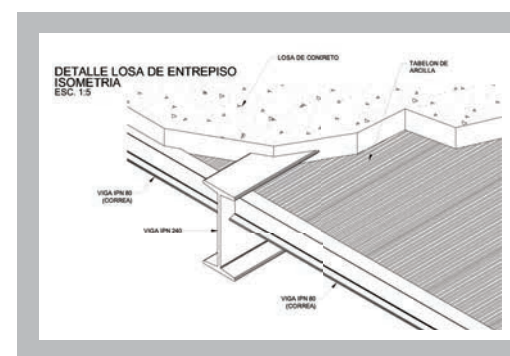
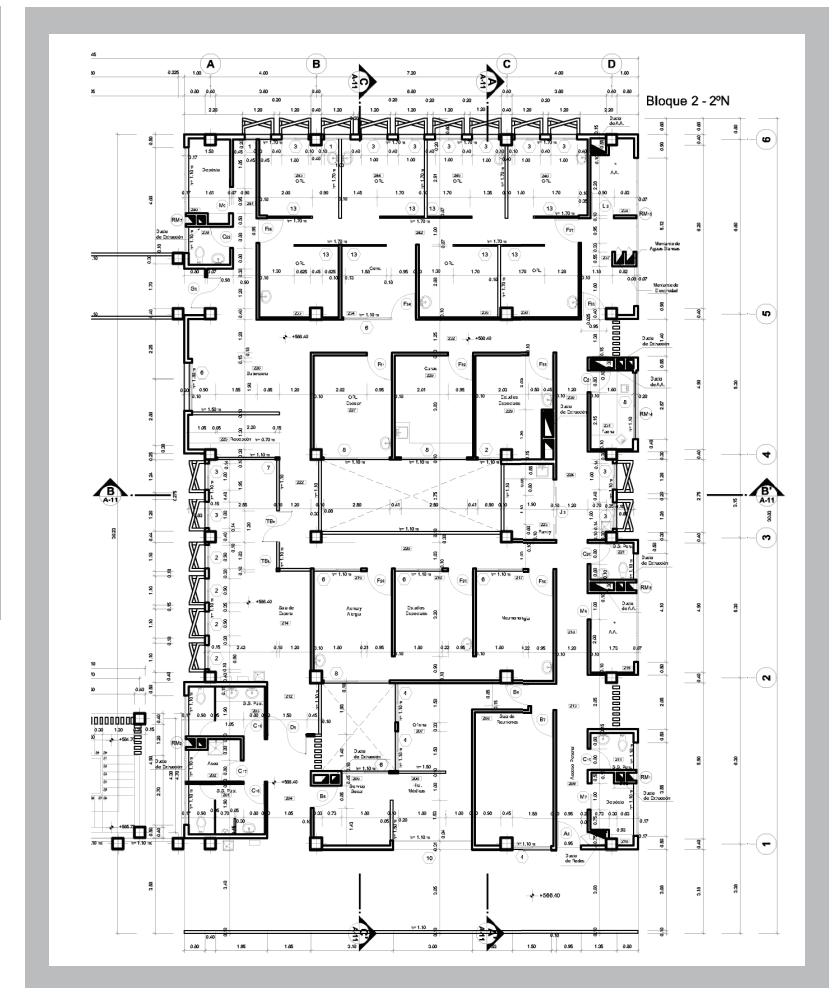
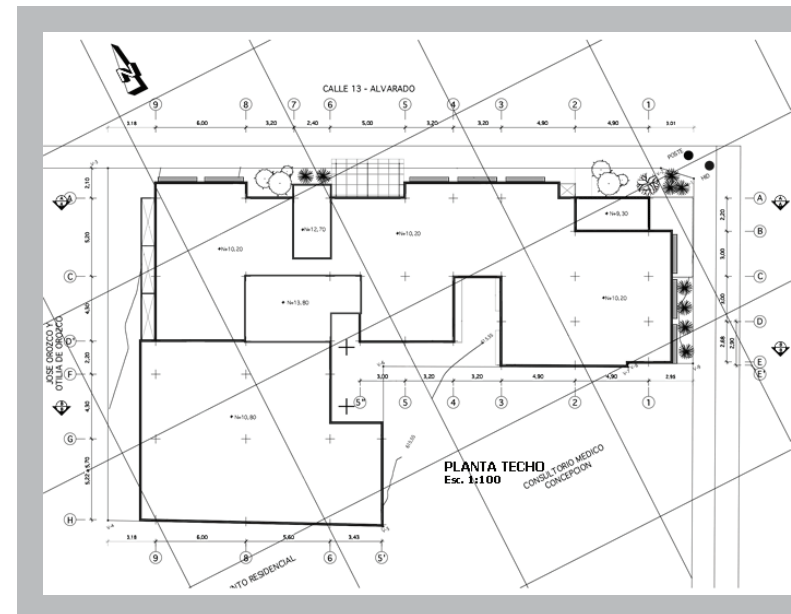
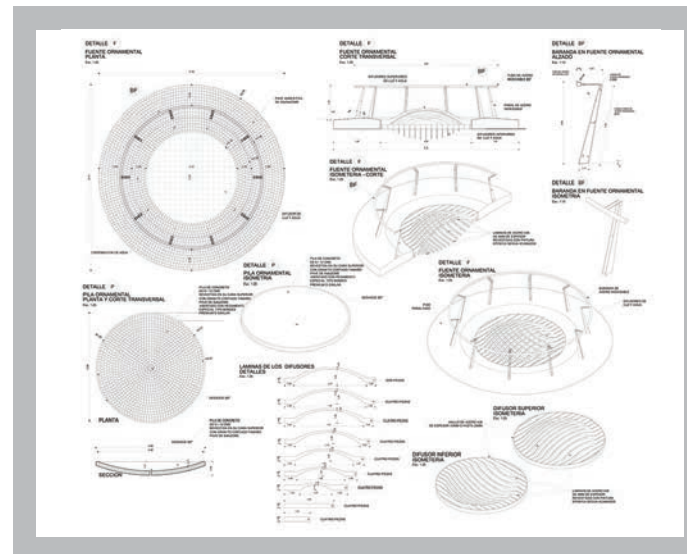
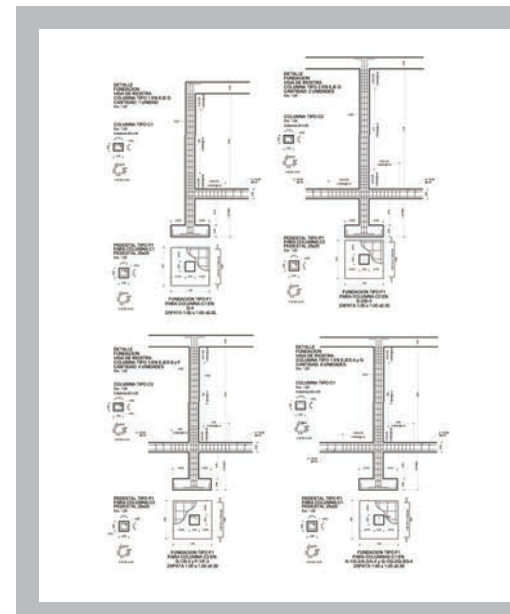
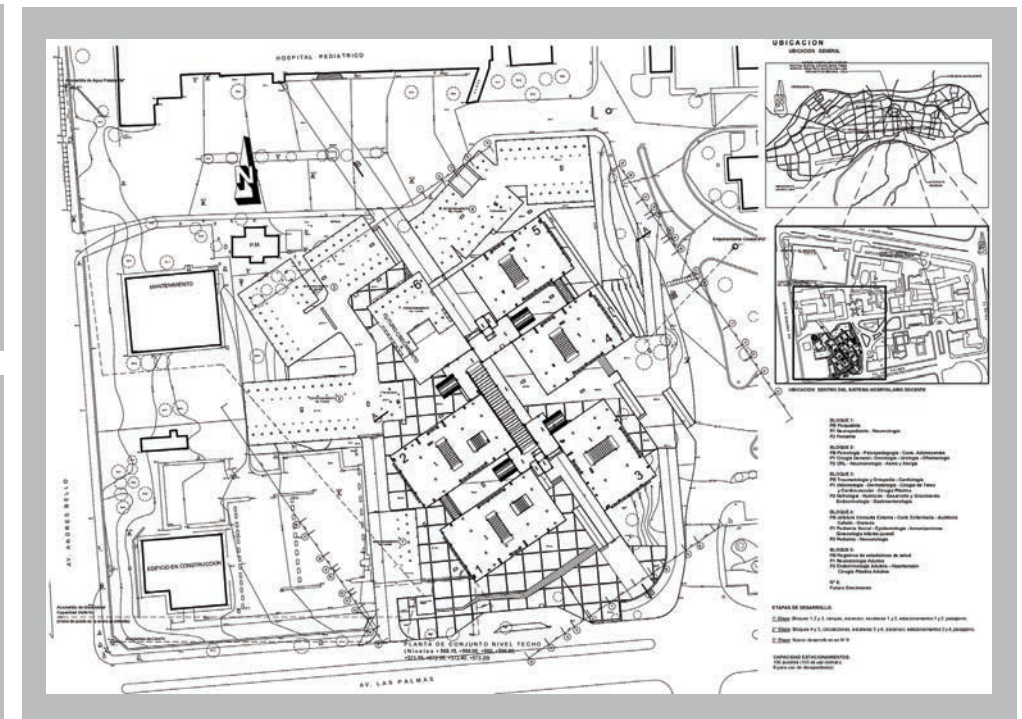
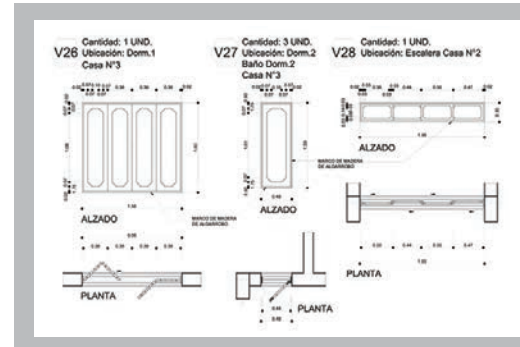
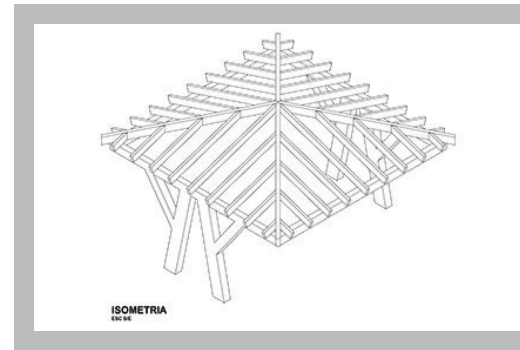


## AutoCAD

Although AutoCAD is not the primary production platform for many contemporary AEC workflows, it remains a widely used industry standard, especially for sharing and coordinating 2D construction documents with manufacturers and vendors who do not require Revit models. I am also proficient in producing, editing, and integrating CAD files within modern modeling and documentation workflows. These examples demonstrate my ability to deliver complete, coordinated construction document sets.



Software Skills





## Enscape

For the schematic design and design development phases, 3D renderings are used to validate design decisions, refine material selections, and communicate design intent. I am proficient in using Enscape to produce renderings efficiently within project timeframes and quality expectations.





## Photoshop

Adobe Creative Suite can be used as a set of post-production tools to transform technical 2D and 3D monochromatic drawings into compelling, atmospheric presentations that communicate design intent to clients and stakeholders and support marketing efforts. I primarily used Adobe Photoshop to achieve the intended results.

